

## Dates to Remember

Friday	12th June
Monday	15th June
Tuesday	16th June
27th and	28th June
Tuesday	30th June
Wednesday	1st July
Monday	3rd August
Wednesday	26th August
16th and	17th September

EZ Lunch - hot and cold lunches ordered online (by 9:00am) and delivered today.

Sushi orders collected from the school office at 9.00am for Tuesday lunchtime delivery.

Last day for Scholastic orders. Please ensure these are handed in to the office by 3pm.

Matariki Festival.

Reporting to Whanau from 3:20 to 5:30pm. Book your appointment using the Skool Loop app.

Reporting to Whanau from 3:20 to 5:30pm. Book your appointment using the Skool Loop app.

**Teacher Only Day.** School closed but Kelly Club open for bookings.

Peninsula Cross Country

Year 5/6 Education Outside the Classroom at MERC, Long Bay

**Hei waka eke noa! - We are all in this together!**

## Kia ora koutou!

It has been a real pleasure being back at school over the past few weeks. Things really feel like they are beginning to get back to normal. We are delighted with the news of the move to level 1. With this move, it is a good time to announce some organizational changes and to update you on up and coming events.

## Reporting to Whānau

In the past, during Term 2 we have had Learner-Led Conferences. For those who are new to Bayswater, the children and teachers would normally take a couple of weeks to update assessments and reflect on the learning which took place during the first part of the year. Teachers and children would work collaboratively on a report on learning achieved and goals for the next part of the year. Children would then present this report to whānau, supported by their teacher, at a conference.

This year, in response to the current situation, we have decided to complete mid-year reporting in a different format. We want to make time for parents and teachers to reconnect and get together to discuss how children got on with distance learning and how they are getting on back at school, adapting to all the changes which they have experienced. These conferences will take place on the afternoons of 30<sup>th</sup> June and 1<sup>st</sup> July between 3:20pm and 5:30pm. You can make an appointment to meet your child's class teacher at school on the Skool Loop app by clicking on 'interviews'. If you would prefer a Google Meet virtual appointment, please select 'yes' in the appropriate place. The teacher will then send you a link. If you are unable to download and use the app, please email the class teacher directly. As the meetings are only ten minutes, please ensure you are online, in the 'meet' ready for the teacher to join you at your allocated time. Because time is short, we suggest leaving a ten minute gap between interviews for your different children to allow you time to get from one to the next, whether virtually or walking from class to class. The main focus of the interview will be the adults exchanging information. Your child may attend if you would like but s/he will not have prepared a presentation or report to share with you at this stage.

## Matariki Festival

The Parent Group has already met and started to organise a scaled-down Matariki Community Event. This will take place over the weekend of 27<sup>th</sup> and 28<sup>th</sup> June. It will involve a light trail, performances (out and about rather than on site here at school), food and workshops. If you would like to be involved, the Parent Group would love to hear from you! Perhaps you or someone you know has a food truck or maybe you have a skill which you would be willing to teach others. If you would like to help in any way, please contact: [parentgroup@bayswaterschool.nz](mailto:parentgroup@bayswaterschool.nz)



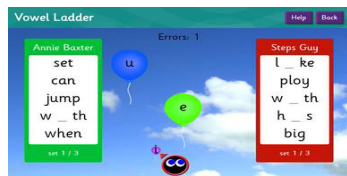
## School Library

As you know, for the major part of last year and the beginning of this year, the school library was out of action. Building work is still ongoing but even so, a slightly smaller school library is now operational. For many years, we have had fantastic parents who have given up their time to help out in the library. We are so grateful for all of their hard work. We are keen to encourage as many parents or grandparents as possible to come along and get involved too. Perhaps you could spare some time each week to help when your child's class visits the library or maybe you would like to come into school at morning tea or lunchtime to help with a library activity. This could be working with a group of children who enjoy playing chess or another board game, helping children with a craft activity or reading a story to a group of kids.

If you would like to be involved in the library, please contact your own child's teacher, the school office, 09-445-6226 or Allison (teacher in charge of the library) on [allison@bayswater.school.nz](mailto:allison@bayswater.school.nz). It would be great to establish a group of interested parents.

## Continued Support for Home Learning

Many parents have commented that they enjoyed using some of the resources made available to children during level 4 to support their learning at home. You may not know that these resources are always available for your child to use in their own time. You can continue to log in to Steps, Study Ladder and Epic from home.



## Sports Coaching

Thank you to all the parents who are keen to resume sports coaching for netball and basketball. Netball and basketball coaching will shortly be resuming on the front courts. Some training sessions are before or after school. If a coaching session is in progress, children who are not involved need to stay clear of the courts please.

## Cross Country

The Peninsula Cross Country competition should have taken place this term. This has now been rescheduled for next term on the 26<sup>th</sup> August. Children who are interested in competing have already started training. We would love some help with this! Maybe you are a keen runner and would be willing to work with a small group of enthusiastic children. If this sounds like you, please contact Claire S. on [claires@bayswater.school.nz](mailto:claires@bayswater.school.nz).



## Teacher Only Day

Staff missed two Teacher Only Days during and immediately after the lockdown period. We do now need to make one of these up as we have some funded professional learning development which we need to complete. This will now take place on Monday 3<sup>rd</sup> August. School will be closed on this day. Kelly Club will be operational for the day so you could book your child in if you need some help with child care for the day: <https://www.kellyclub.co.nz/bayswater>

## Drop off and Pick Up Times

This has been one of those situations where the children have really surprised us! I must admit that on the first few mornings, we were really worried about the junior children being dropped off and collected by whānau at the gate. We thought there would be tears and tantrums but we were proved wrong by our amazing, resilient and independent tamariki! Children separated from whānau with absolutely no fuss (from the children!), came into school, organised their own belongings and got themselves ready, cheerfully, for the start of the school day. Under level 1, we do not need to maintain our contact tracing register so whānau are once more welcome to come into school. This may, however, be an opportunity to help your child to maintain his/her new found independence. Maybe whānau might consider coming into school to visit the classroom once a week and on the other days, support children to maintain the gains they have made.



Drop off time will return to normal. We recommend children arrive in school between 8:40am and 8:50am. They can come into school via any of the usual gates. Any child who needs to be here before 8:20am must be checked into before school care at Kelly Club. <https://www.kellyclub.co.nz/bayswater> At the end of the day, we will still expect unaccompanied children to make their way straight home rather than lingering on site. Please remind your child of this.

Bicycles and scooters may now be wheeled down the small pathway to the west of the site, from Bayswater Avenue to the bike sheds. Children will, once again, be asked not to use the large front driveway.



## Friday Assembly

Friday assembly will be returning to its usual time, as soon after 9:00am as possible. All whānau are welcome to join us in the hall.

SIR PETER BLAKE



## Year 5/6 Biennial School Camp

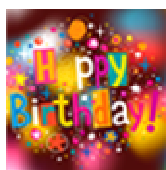
Sadly, our biennial school camp to MERC Long Bay, which was booked for the week before last was cancelled because of the Covid-19 restrictions. Unfortunately, most school camps are booked at least a year in advance and so it is not possible to simply rearrange it for a later date. This is particularly sad for the children who will miss out on what is for many, a highlight of their primary school years. We know some parents who had planned to accompany us to camp will also be very disappointed.

Instead of a full residential camp, MERC has managed to fit us in for two EOTC (Education Outside the Classroom) days on 16<sup>th</sup> and 17<sup>th</sup> September. During these days, the children will travel up to Long Bay and get to have a go at many of the activities they would have experienced on the full camp. We will need parents to accompany us on these two days. Claire S and the Whānau Kokoru team are still working on the finer details but we anticipate making this a memorable, challenging and exciting time for the children, with activities off site and back at school. More details will follow shortly for Whānau Kokoru parents. If you are interested in accompanying us on one of the days, please let your child's class teacher know.

**Lindsay Child**  
Tumuaki / Principal

## Congratulations

Room 1	Alice	demonstrating all the Bayswater values in your time here. You are a valued member of Ruma Tahi, Whanau Kokoru and Bayswater School. We wish you luck in Nelson, they are lucky to have you!
Room 2	Hayley-Rose	demonstrating personal excellence in your writing. You wrote descriptive similes and metaphors to describe your time during the rahui. Tumeke!
Room 3	Lucy	showing personal excellence in writing. You wrote and shared some creative similes and metaphors to describe your time in your bubble.
Room 4	Nikau	showing resilience as a learner. You persevered over time to achieve personal excellence with your rāhui bubble art and stepped outside your comfort zone to present an experience with a class audience Ka rawe!
Room 5	Mae	being a courageous learner who shared her mihi with the class and who regularly leads the way in our imaginary world - mīharo!
Room 6	Julian	consistently demonstrating resilience and personal excellence in all areas of his learning. Mahi pai
Room 7	Awanui	being enthusiastic about your passion project and sharing your learning at home so you can continue your research. Ka pai tō mahi!
Room 8	Metua	the Bayswater value of resilience. You are persevering through challenges and learning along the way. You are collaborating well with others during group learning. Tau kē koe!
Room 9	Hudson	the Bayswater value of resilience. You were brave and didn't give up and are doing so well at enjoying your learning in school.



## Happy Birthday to...

For week beginning Tuesday 2nd June

Ayden Bookcock 7, Azur Basset 7, Karlia Dunne 6,

Maria Greig 6, Ena Ljubobratovic 7 and Jayde O'Keefe 10.

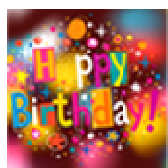
We hope you had a wonderful time celebrating your special day with family and friends!





## **Congratulations** to our students who received a certificate at assembly on Friday 5th June for:-

Room 1	Sienna	demonstrating personal excellence and creativity. You put in the mahi, and your drawing of the pirate ship in the storm was amazingly detailed. Tumeke!
Room 2	Lochie	demonstrating personal excellence in our reading group discussions. You made connections to the text as you identified descriptive language. Ka wani ke!
Room 3	Juno	showing personal excellence in writing. You used your creativity and descriptive language to make a text more interesting to read.
Room 4	Sebastian	personal excellence in writing by showing that personal voice matters. You have been painting a picture in the reader's mind, using interesting detail, as well as sharing your thoughts and feelings. Ka rawe!
Room 5	Aggie	demonstrating the Bayswater value of resilience - you have begun to take risks in your learning and volunteered to lead our karakia - mīharo!
Room 6	Charlie	consistently demonstrating all of the Bayswater values in everyday school life. Ka Pai!
Room 7	Arlo	the Bayswater Value of Personal Excellence. You have been so focused on listening to letter sounds and rhyme, and you are using what you know to help you in reading and writing. Kei te pai!
Room 8	Zach	the Bayswater value of personal excellence. You have worked hard on your passion project and have been a leader to our ropu. Tu Meke.
Room 9	Maria	the Bayswater value of Personal Excellence. You demonstrated creativity in your idea for writing from the perspective of the damaged boat. Tino pai!

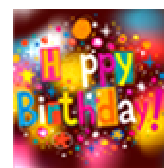


## **Happy Birthday to...**

**For week beginning Tuesday 9th June**

**Roman Maslin-Sharma 10, Luke Harbour 7, Marco Castaneda Gereda 6,  
Brooklyn Carew 11, Lily Van Greunen 10, Harina Han 10, Alexander Bauer 9  
and Vedant Vinod 7.**

We hope you have a wonderful time celebrating your special day with family and friends!



**Bayswater School is now on the Skool Loop app! Download this FREE app now to:**

- access school newsletters
- [send an absentee message](#)
- receive instant messages directly from the school (allow push notifications)
- check notices - you choose the groups you want to receive notices from
- access the Bayswater School Community Calendar

## Be A Cool Cat



## Download our School App Today!

**NEVER MISS IMPORTANT SCHOOL INFORMATION AGAIN!**



Absentee

🔊 Events 🔊 Cancellations 🔊 Notices

🔊 Newsletters 🔊 Permission Slips

🔊 Instant notifications 🔊 Absentees



Calendar



Notices



Permission



Newsletter

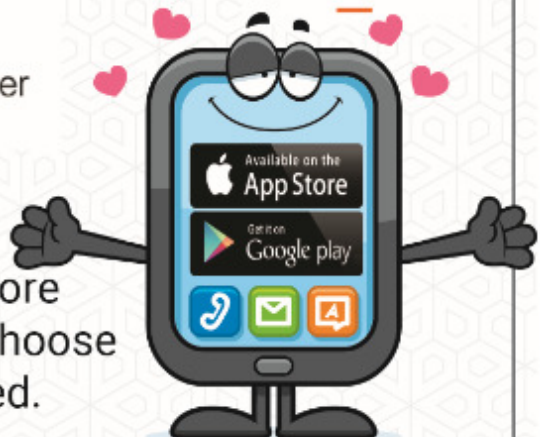


Contacts



**Simple free download:**

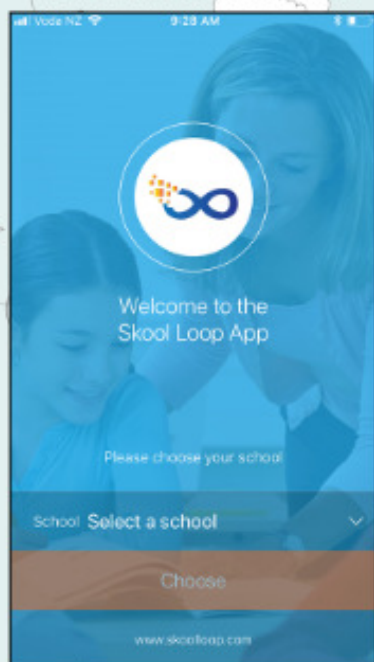
In Google play & App Store  
search '**Skool Loop**' & choose  
our school once installed.



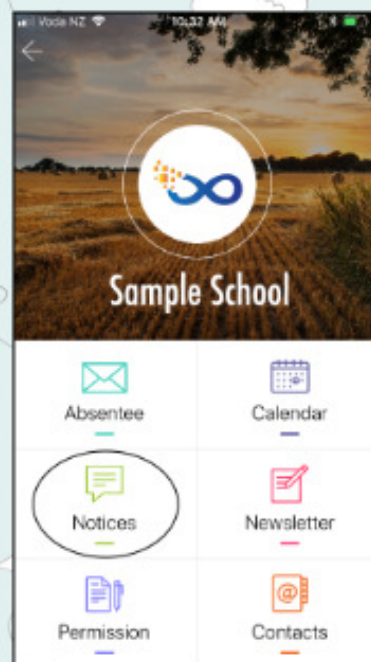


# How to join notice groups & receive notifications via our app

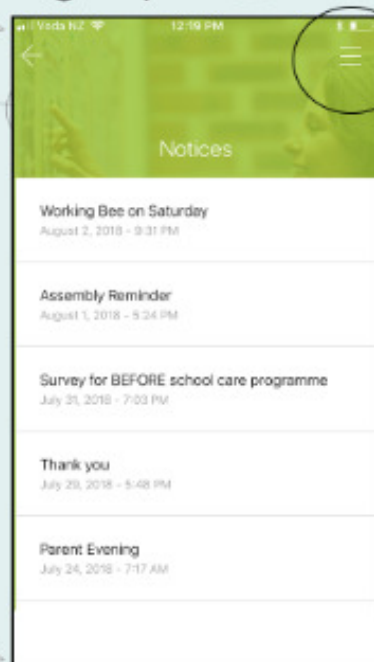
1) Download the Skool Loop App & allow notifications



2) Open our school & tap on notices

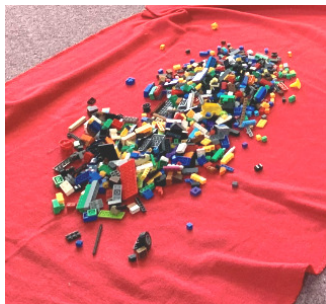


3) Tap to open the groups menu



4) Tick the groups you want to join!





### Lego Club

Library LEGO club has started up again. Every Thursday until the end of term from 1:20 pm to 1:40 pm.

### Fishy Business - Sushi Online Orders and Payments

Parents are now able to order sushi by emailing or texting Fishy Business directly.

Please make your payment to **First Select Feng Ltd** using the account number **06 0323 0666763 01** and use [Bayswater](#), your [childs name](#), and [room number](#) as the reference.

Once payment has been made please email your order (along with a screenshot of your payment) to [helen\\_cana@hotmail.com](mailto:helen_cana@hotmail.com) or text **021 036 1148**. Helen will send you a confirmation.

Parents may also like to place their orders and pay in store at Fishy Business, 71A Lake Rd, Devonport, 09 445 7333.

Order can also still be handed in to the office on Monday mornings.

## Community Notices



**NEW START DATE**

**5-8 year olds**

---

**SAT. 6th June**

# NORTH SHORE UNITED FOOTBALL CLUB

Calling future football stars!

Registrations Open Now

All players aged 4+ years welcome

Register via [www.nsu.org.nz](http://www.nsu.org.nz) or

Email - [office@nsu.org.nz](mailto:office@nsu.org.nz)

