

Dates to Remember

Thursday	19th November
Friday	20th November
Friday	20th November
Monday	23rd November
Friday	27th November
Monday	30th November
Wednesday	2nd December
Thursday	3rd December
Friday	11th December
Tuesday	15th December
Wednesday	16th December
Wednesday	16th December
Friday	18th December

Lego Club in Library from 1.20pm - 1.50pm. All welcome.

No Assembly today due to Peninsular Kapa Haka event.

EZ Lunch - hot and cold lunches ordered online (by 9:00am) and delivered today.

Sushi orders collected from the school office at 9.00am for Tuesday lunchtime delivery.

Last day for Scholastic book orders.

Road Patrollers Rainbows End Trip.

Peninsular Athletics. (Save Day Friday 4th December)

Helpers Morning Tea from 11.00am in the staffroom.

Prize giving assembly commencing at 1.30pm.

Whanau Kokoru Picnic.

Whanau Puna and Whanau Wai Picnic.

Year 6 Pool Party from 3pm to 4.30pm.

Final Assembly and Year 6 Farewell commencing at 2.00pm

Our saying for this week is:

Ko koe ki tēnā, ko ahau ki tēnei kīwai o te kete. You at that and I at this handle of our kete.
(If we co-operate and work together it makes our tasks easier.)

Nau mai, haere mai!

David Westwood

One of our wonderful tamaiki featured on TV during the Aotearoa Music Awards on Sunday night. The piece was about the Ruaukatauri Music Therapy Centre who use 'the planned use of music to assist in the healing and growth of people with emotional, intellectual, physical or social challenges'. David was seen singing, playing instruments and certainly enjoying himself!



Steven and Baby Arlie

Steven welcomed the gorgeous Arlie at 12am on the 21st of October, weighing in at 7 pounds, 15 ounces. We know he is having a wonderful time with her and wish him and family all the best. Awww...



Athletics Day

The sun decided to play ball on Tuesday and everyone enjoyed a great Athletics Day!

Children in years 3 - 6 competed in high jump, long jump, softball throw and sprints including 70m, 100m, 200m and 800m.

There was some strong competition and the competitors proudly put their all into winning, as well as displaying good sportsmanship, both in their effort and their attitude towards disappointment. It was great as always to welcome some students from Belmont intermediate who come down each year to assist at each of the activities.

In the afternoon the year 1 and 2 children had an opportunity to show off their skills at sprints, hurdles, shotput (bean bag throw) and the standing start long jump.

Thank you to ClaireS for all her hard work and time in preparing for the day and making it a success.






Helpers' Morning Tea
Thursday 3rd December at 11.00am

To all parents, whānau and community members who help in so many ways... Please come to our helpers' morning tea on **Thursday 3rd December** from 11.00am in the staffroom. We would like to show you how much we appreciate all that you do for us.

To assist us with our catering please RSVP to Fiona or Irene by Wednesday 25th November.

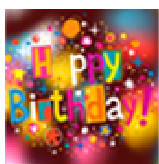
Please email admin@bayswater.school.nz or call 445-6226.

Sibling Enrolments

If you have a pre-schooler due to start school in February next year, it would be appreciated if you could advise the school office and pick up/drop off an enrolment pack. This will assist us greatly when planning classes for next year.

Similarly, if you are leaving Bayswater at the end of this year and not returning in 2020 we would appreciate knowing this in advance.

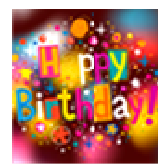
Marianne Coldham
Acting Principal / Tumuaki Tuarua



Happy Birthday to...

Maraea Mita 11yrs, Samuel Morunga Low 7yrs, Marika Taege-Stacey 6yrs
and **Tyler Matairangi 11yrs.**

We hope you have a wonderful time celebrating your special day with family and friends!



Sports Notices

Touch Rugby

- Year 1 **Kowhai 2 - Devonport Defenders 7.** This week was a great example of team stamina with no substitutions available. Players of the day were **Arlo Western** for great team work and **Karlia Dunne** great running.
- Year 2 **Whero** team played St Leos. The score was 6 - 3 to St Leos. The player of the day was **Awanui Faulkner**. Whero played well and tried their best. They were great on defence. A wonderful team effort.
- Year 3/4 **Kakariki** team played Hauraki Warriors. The score was 7-1 to Hauraki. We had two player of the day winners - **Taylah-Gene September-Tapsell** for fantastic defending and **Emilio Fabres** for always being in the game and being ready. The whole team worked well together and continue to have fun and do us proud.
- Year 5/6 **Kikorangi** team played St. Leos. The score was 7 – 2 to St Leos. The player of the day was **Leleia Parker**. Kikorangi team played well together with lots of team talk on the field. They were great on defence and kept their defence up right until the end!

Basketball

The Bayswater Sharks played St Josephs. The final score was Sharks 2 - St Joseph's 24. The Sharks played well and fought to the end. Player of the Day was **Nikau** for getting involved and not giving up.

Congratulations to our students who received a certificate at assembly for:-

Room 1	Cory	demonstrating personal excellence during writing. You contributed good ideas and added fantastic alliteration and similes to the text to enhance the tone. Tumeke!
	Saharah	demonstrating personal excellence during Maths. Even when things are challenging, you listen and give it a go. I am so proud of your can-do attitude! Ka rawe!
Room 2	Dillyn-Rose	demonstrating personal excellence as a house points monitor. You have shown initiative and reliability as you stepped up to this new responsibility. Miharo!
	Mirach	demonstrating personal excellence at Waterwise. Your enthusiasm and positive attitude as you took on challenges made you a superb role model. Tumeke!
Room 3	Connor	showing personal excellence in athletics. You are focused and striving for excellence in your favourite events! Miharo!
	Quinn	showing personal excellence as a tuakana. You were a positive role model and encouraged younger teina in house play. Miharo!
Room 4	Esme	showing resilience in maths, by taking risks to share your strategies when solving oral and written problems. Tumeke
	Elias	showing personal excellence in writing, by sharing your ideas and engaging in support to write a storyboard, as well as maintaining stamina when writing independently. Tumeke!
Room 5	Loxs	demonstrating our Bayswater values of resilience and personal excellence in mathematics as you focussed on exploring and understanding fractions - he whetū koe!
	Gabe	demonstrating our Bayswater values of resilience and personal excellence in mathematics as you solved challenging problems and tolerated the feelings of learning - mīharo!
Room 6	Breonna	being a resilient learner. You listen to feedback, acknowledge other ideas and you willingly adjust your thinking in response to feedback. This sets the foundation for your effort to achieve personal excellence in your outcome. Ka rawe!
	Julian	demonstrating the Bayswater values of respect and personal excellence during class, group and buddy learning. You actively listen and respond to others when doing group work to contribute to the success of the team. Tumeke!
Room 7	Stella	Personal Excellence in writing. You took care to take relevant notes when conducting your research. Kei te pai!
	Sebastian	Respect. You show care and take responsibility for our classroom resources. Tino pai!
Room 8	Metua	the Bayswater value of resilience. You took on challenges in writing this week and persevered to produce independent and quality work. Tino pai!
	Milan	the Bayswater value of personal excellence. You give everything a go. It's wonderful to see you taking risks and challenging yourself in all areas of learning. He whetū koe.
Room 9	Marco	the Bayswater value of Personal Excellence. You are using a range of strategies to read challenging texts. We are proud of your focus and progress.
	Willa	the Bayswater value of Personal Excellence. Thank you for enhancing all our learning by thinking critically and sharing your ideas articulately. Mīharo



Community Notices

Kelly Club Bayswater is Hiring!

Programme Co-ordinator and Casual Positions available

We're looking for applicants that are available and willing to work 6.45am-8.30/9am and 2.30pm-6pm Monday to Friday. The Programme Co-ordinator role includes 5-10 hours of admin. Hours of work will vary between 25 to 35 hours per week depending on the specific programme size of your venue and the shifts you are available to work. Full-time work may be available during school holiday periods.

Applicants must be able to work in a team environment, have strong leadership skills, have experience leading a team, have great communication skills, be able to think on their feet, be flexible and adapt to different situations and most of all be passionate and enjoy working with children.

Note: successful applicants will be required to have a police check.

Applicants for this position should have NZ residency or a valid NZ work permit and must have their own form of transport.

To apply for the Programme Co-ordinator position follow the link: <https://www.seek.co.nz/job/50883541>

To apply for a casual position email your CV and cover letter to jeremy@kellyclub.co.nz



CHILDREN'S CAROL SERVICE

Friday 4th December, 3.30pm for a 4.00pm start

Takapuna Methodist Church , 427 Lake Road, Takapuna

Carols and Christmas cheer

Simple crafts from 3.30 pm. Refreshments from 4.30pm.

~ A free community event. All very welcome ~

Come dressed in festive attire (from Santa hats to angel wings)

Enquiries : takapunamethodist@xtra.co.nz



Kaitahi



Community Dinner

**A FREE Community
BBQ Xmas Dinner
made from rescued kai!**

Wednesday 16th December
6.30pm - 8.30pm at Bayswater School

ALL ages are welcome! Let's bring our
community together to share a
FREE meal made from rescued kai.

BYO plates and your picnic blanket!

Please get in touch if you can help!

Email: leah@morganfamily.co.nz OR brianna@briannaparkinson.co.nz



Christmas Tree Orders

Ready to close off 2020? Yes, it's that time of year already! Please support 1st Devonport Scout Group this Christmas by buying your tree from us.

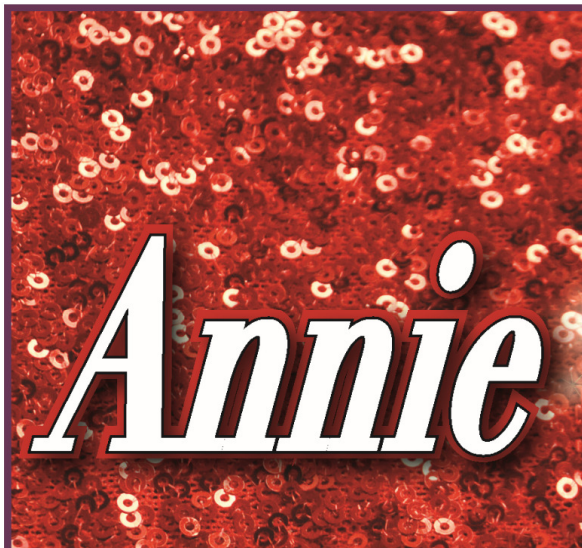
- Standard Size (1.7m – 2.2m) Tree - \$55 includes free delivery
- Large Size (2.2m – 2.7m) Tree - \$85 includes free delivery
- Tree Collection (post Christmas) is \$15

You can order online or email us at 1dsg.xmastrees@gmail.com and we'll send you a link.

We will confirm your order and supply bank account details for online payment. All orders must be received by Tuesday 1st December 2020.

Delivery of trees will take place Thursday 3rd December from 6pm, and collection on Friday 8th January 2021 from 9am.

Please note we deliver only on the Devonport peninsula up to Hauraki Corner. Thank you for your kind support and we wish everyone a Merry Christmas.



Artz on Show School Holiday Performing Arts Workshop

This is a fun yet educational week for students aged 5 – 15 years.

Students participate in a range of performing arts classes, concluding the week with a performance!

18 - 22 January 2021, 9 am – 4 pm daily

Held at Takapuna Normal Intermediate

View our website; www.artzonshow.co.nz
or contact Hayley on either
artz@artzonshow.co.nz or 09 294 7129

ARTZONSHOW.



Pre-book & Save!

SMASH TENNIS

PRE-XMAS HOLIDAY CAMP
Thur 17th & Fri 18th, Mon 21st - Wed 23rd Dec

JANUARY HOLIDAY CAMP
Mon 25th - Fri 29th Jan 2021

9AM-1PM **OR** 9AM-3PM

EASY ONLINE BOOKING
or text Jo: 021 493 489



belmont park
RACQUETS

NEW

www.smashtennis.nz

